

NordicWay and Volvo Cars

Erik Israelsson



VOLVO CARS - CONNECTED SAFETY - IN PRODUCTION (2016)



Slippery Road Alert



Hazard Light Alert

SLIPPERY ROAD ALERT

Part of Connected Safety

THE CLOUD



HAZARD LIGHT ALERT

Part of Connected Safety

THE CLOUD

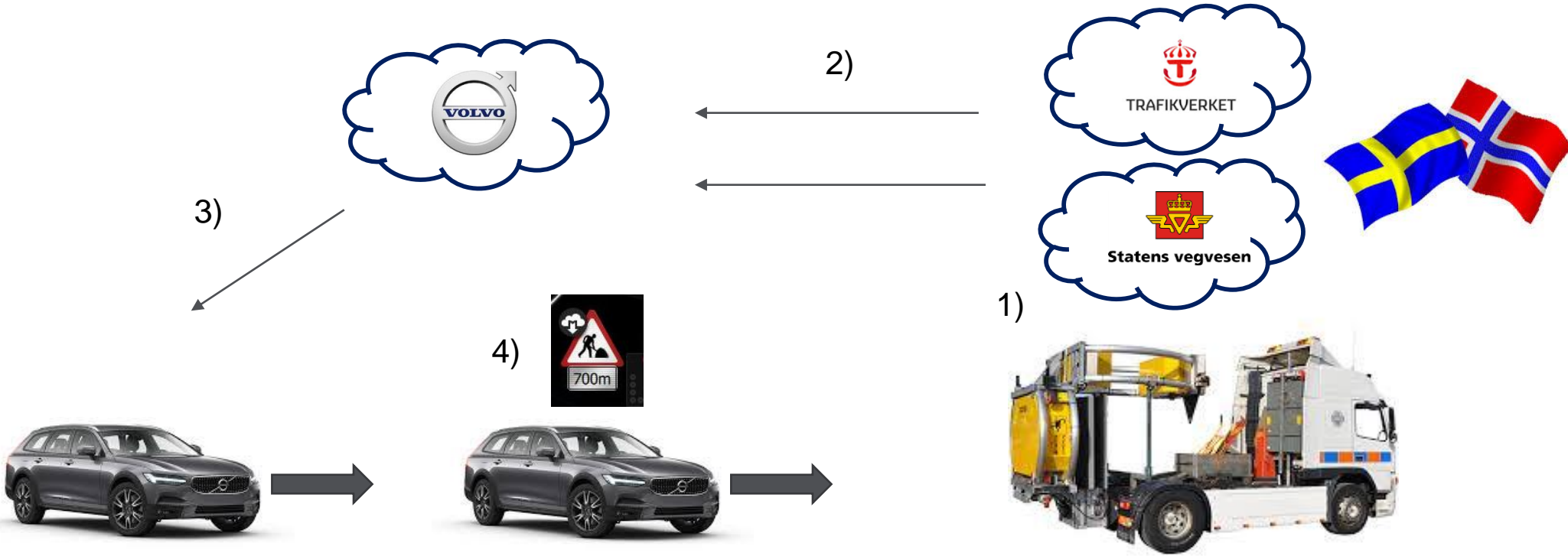




Interchange



SCENARIO



DEMONSTRATION VEHICLE



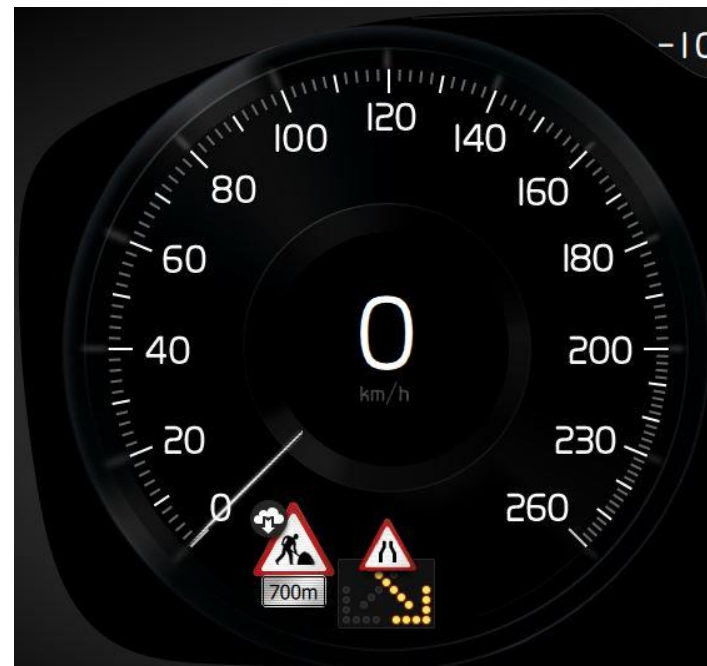
Cloud application logic

- Message routing
- Aggregation



In-vehicle application logic

- Send/receive
- Issue alert (time gap)



Prototype HMI (not production)

ABOUT ZENUITY



The **Connected Safety team** at Volvo Cars
is now
The **Connected Safety team** at Zenuity

